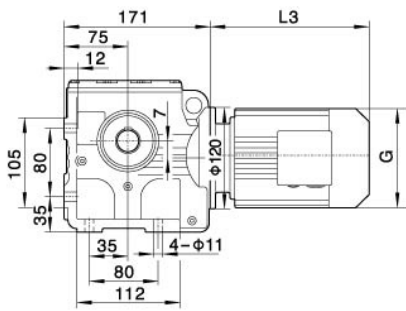
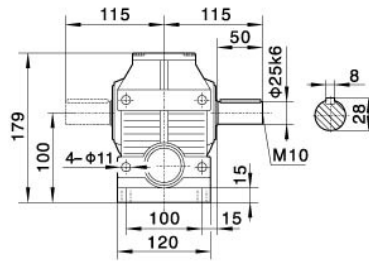


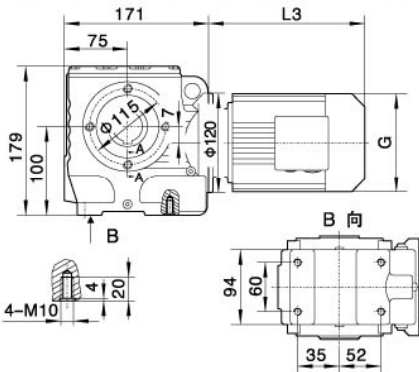
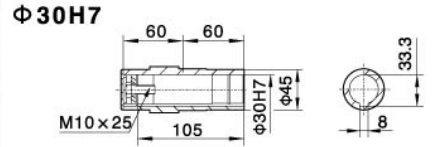
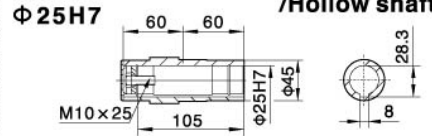
外形安装尺寸
Mounting Dimension Sheets-overview



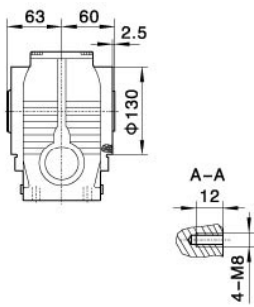
S47



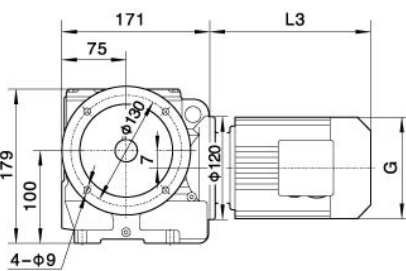
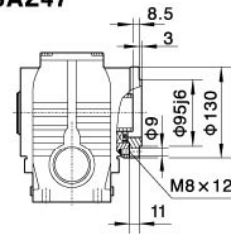
SA47/SAZ47/SAF47空心轴
/Hollow shaft



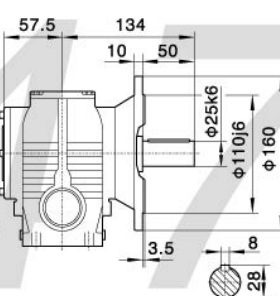
SA47



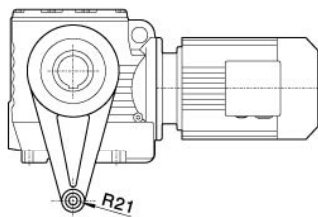
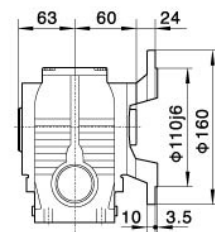
SAZ47



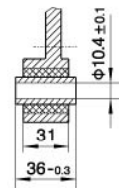
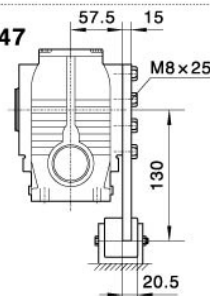
SF47



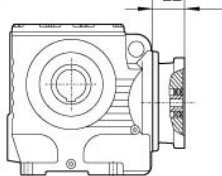
SAF47



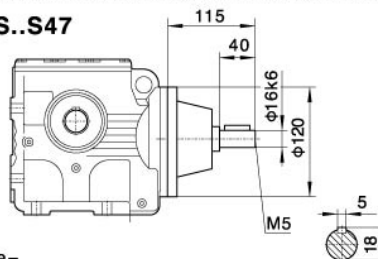
SAT47



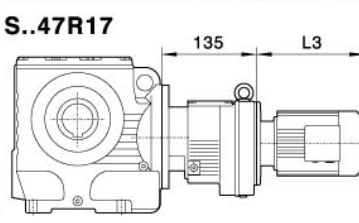
电机需方配或配特殊电机时需
加联接法兰



S..S47



S..47R17



注: 其余尺寸见
相对应结构
形式

Note: For other
values please
refer to the o-
pposited stru-
cture.

When equipping the user's motor or the spe-
cial one, the flange is required to be connected.

Y2电机座号 Motor size	63	71	80	90S	90L
功率/4P Power/(kW)	0.18	0.25 0.37	0.55 0.75	1.1	1.5
L3	235	245	278	304	328
G	130	145	175	195	195
L2	71	71	71	71	71

注:1.SA、SF、SAF、SAZ壳体为通用件,安装尺寸均可相互参照.2."S.."表示S、SA、SF、SAF、SAZ

Note:1.The housings of SA、SF、SAF、SAZ are common parts.The mounting dimensions may consult each other. 2."S.."mean S、SA、SF、SAF、SAZ